

UNSIGNED HARDCOPY  
NOT CONTROLLED



Instruction  
Hardware Engineering

No. LMS 13-3

Subject: Variable Resistor Installation

APPROVED BY Manager, Hardware Engineering

STATUS Maintenance Revision

PURPOSE Defines the assembly and installation of variable resistors with lighted and unlighted knobs, and shall be utilized by L-3 Communications Corporation, Link Simulation & Training Division (here after referred to as Link) personnel involved in the installation or assembly of variable resistors specified herein.

AFFECTED FUNCTIONS Hardware Engineering  
Manufacturing

REFERENCES **LMS 1-6** Workmanship for Electronic Assemblies  
**LMS 13-1** Assembly Procedures  
MIL-HDBK-454 General Guidelines for Electronic Equipment

DEFINITIONS None

INSTRUCTION

1. Requirements
  - 1.1 Variable resistors, part numbers 434685 through 434704, with lighted knobs, shall be assembled and installed in accordance with Figure 1.
  - 1.2 Variable resistors, part numbers 434685 through 434704, with unlighted knobs, shall be assembled and installed in accordance with Figure 2.
  - 1.3 Part number callouts in the figures and text of this instruction are for reference only. The engineering drawing shall specify all necessary parts and materials.
2. Quality Assurance Provisions
  - 2.1 The Quality Assurance organization shall be responsible for monitoring workmanship requirements of MIL-HDBK-454, GUIDELINE 9 (**LMS 1-6**).
3. Preparation for Delivery (Not Applicable)

11-08-06

1 of 4

Rev. H

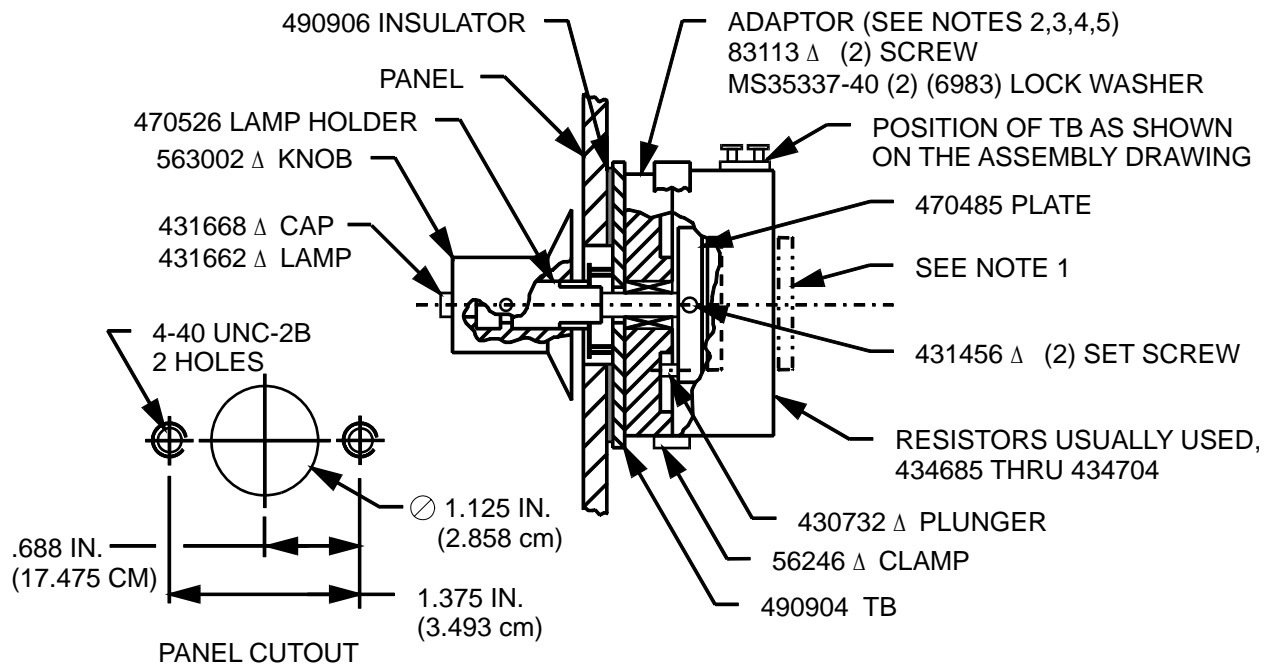


4. Notes

4.1 Parenthetical identities are for 36378 reference only.

NOTES:

1. REMOVE EXISTING COUPLING ARM ON LAST RESISTOR AND RETURN TO STOCK UNDER LINK PART NO. 434705.
2. ADAPTER 470527 REF ALLOWS FOR 320° THROW WITH DETENTS AT 0°, 160° & 320° AND A MECHANICAL STOP AT 0° & 320°.
3. ADAPTER B470527 REF ALLOWS FOR 320° THROW WITH DETENTS AT 0° , 296° & 320° AND A MECHANICAL STOP AT 0° OR 320°.
4. ADAPTER 910724 REF ALLOWS FOR 320° THROW WITH DETENTS AT 0° , 320° AND A MECHANICAL STOP AT 0° & 320°.
5. IN SPECIAL CASES, OTHER ADAPTERS MAY BE USED.
6. ALL PART NUMBERS IN THIS FIGURE ARE FOR REFERENCE ONLY.
7. APPLICABLE LINK MANUFACTURING STANDARD LMS 13-1 ASSEMBLY PROCEDURES.
8. PARENTHETICAL IDENTITIES ARE FOR 36378 REFERENCE ONLY.
9. D VENDOR ITEM—SEE SPEC CONTROL DRAWING.

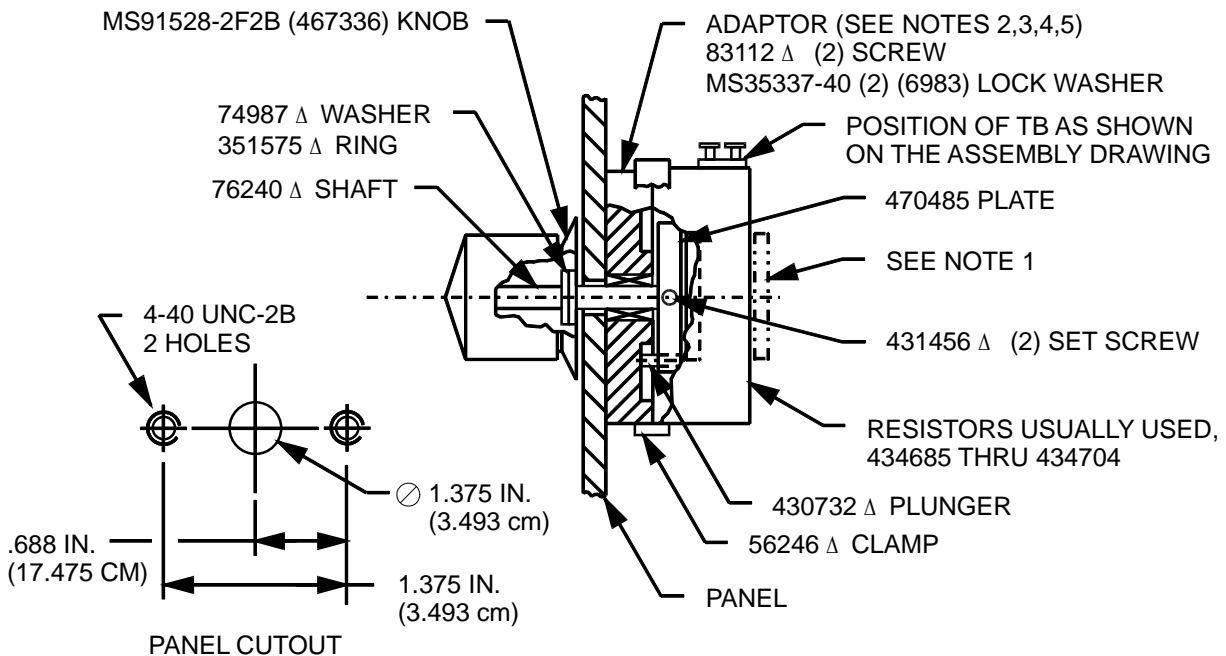


00111345

**Figure 1 Installation of Variable Resistors  
(434685 Through 434704) Lighted**

NOTES:

1. REMOVE EXISTING COUPLING ARM ON LAST RESISTOR AND RETURN TO STOCK UNDER LINK PART NO. 434705.
2. ADAPTER 470527 REF ALLOWS FOR 320° THROW WITH DETENTS AT 0° , 160° & 320° AND A MECHANICAL STOP AT 0° & 320°.
3. ADAPTER B470527 REF ALLOWS FOR 320° THROW WITH DETENTS AT 0° , 296° & 320° AND A MECHANICAL STOP AT 0° OR 320°.
4. ADAPTER 910724 REF ALLOWS FOR 320° THROW WITH DETENTS AT 0° , & 320° AND A MECHANICAL STOP AT 0° & 320°.
5. IN SPECIAL CASES, OTHER ADAPTERS MAY BE USED.
6. ALL PART NUMBERS IN THIS FIGURE ARE FOR REFERENCE ONLY.
7. APPLICABLE LINK MANUFACTURING STANDARD LMS 13-1 ASSEMBLY PROCEDURES.
8. PARENTHETICAL IDENTITIES ARE FOR 36378 REFERENCE ONLY.
9. D VENDOR ITEM—SEE SPEC CONTROL DRAWING.



00111346

**Figure 2 Installation of Variable Resistors  
(434685 Through 434704) Unlighted**